

November 2024 NEWSLETTER

Welcome



BLUETONGUE UPDATE

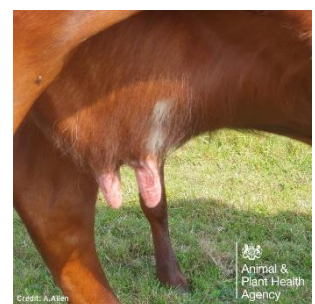
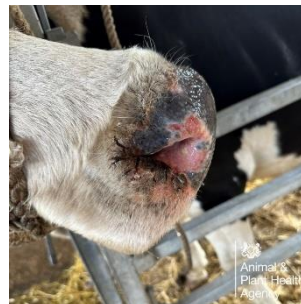
Although we covered some information on bluetongue in our September newsletter, we felt it appropriate to highlight the importance of remaining vigilant for any suspicions of clinical cases. It is essential these suspicions are reported to the APHA by calling 03000 200 301. Bluetongue is a notifiable disease and therefore must be reported by law if disease is suspected.

The restricted zone has now increased to cover parts of Leicestershire and Warwickshire, following an identified case, all of Northamptonshire, Bedfordshire and Nottinghamshire as well as many other counties to the east. Please visit the gov.uk website for the current restricted zone. Movement of susceptible animals into, within and out of the control zone is prohibited without an appropriate licence which can be obtained via the gov.uk website ([Bluetongue movement licences and designated slaughterhouses - GOV.UK](https://www.gov.uk/bluetongue)). Movements may require pre and post movement testing so please ensure you allow plenty of time for requirements to be met.

Reminder of some of the clinical signs: Images of clinical signs provided by the APHA, further images can be found at [gov.uk/bluetongue](https://www.gov.uk/bluetongue) or at ahdb.org.uk/clinical-signs-of-bluetongue.

Cattle:

- Reddening and erosions on the teats
- Redness between the digits
- Ulceration and crusting around the nostrils
- Lethargic
- Excessive tear staining
- Nasal discharge
- High temperature
- Not eating
- Milk drop



Sheep:

- Ulcers and lesions in the mouth and nose
- Nasal redness and discharge
- Discharge from the eyes and nose
- Swelling of the head, neck, lips and tongue
- Heat and tenderness at the coronary band
- Fever
- Recumbency



Vaccination: Three unauthorised vaccinations have been granted a special licence for use against BTv-3 (current strain we are facing), which reduce the clinical signs experienced and/or reduce mortality associated with disease but do not provide protective immunity against contracting the virus or prevent the animal being infectious. If you are interested in vaccination, please call the practice to discuss the vaccinations further. You must comply with the general licence requirements if using the vaccination. Vaccination may have an impact on future trade/export.



LIVER FLUKE

The risk posed by liver fluke changes year on year and varies between farms and even fields on the same farm. Fluke risk varies with climatic conditions, farm history, geographical locations and topography. Using fluke forecasts can help with monitoring the risk in your area. Performing fluke testing enables us to determine the presence of fluke on your farm or identify when fluke is posing a problem for animal health and production. Testing is performed by a few different methods depending on the time of year but may include blood sampling, faecal egg counts, faecal coproantigen tests, postmortem or a new antibody test that can be performed within 10 minutes. Targeted treatment when a problem is identified helps to reduce unnecessary treatments and therefore reduce the risk of resistance developing.

We urge everyone to remain vigilant and perform testing for liver fluke this year, with climatic conditions in recent years resulting in lower cases it's easy to forget about the threat of disease. However, with some exceptionally wet weather this year and the ever-changing climatic conditions the normal timings and patterns of fluke can change. Acute cases of disease have been seen by the APHA laboratories performing postmortem from September onwards.

Smallholder Meeting

This meeting is a practical session offering an opportunity to learn how to assess key health indicators in sheep, goats, alpacas and cattle. We will also discuss how to assess body condition score in your animals.

When: Wednesday 20th November 2024: 6:30pm for a 7pm start.

Please call the office on (01455) 710935 or email office@ccfarmvets.co.uk to book your place.

This meeting will be free for members of the smallholder club. There will be a small charge for non-members.

ANNUAL CHRISTMAS QUIZ

We will be hosting our annual Christmas quiz in memory of Tom again this year, we hope you can join us for what is a fun-filled evening. It is a good opportunity for everyone to come together for a social and to raise some funds for some fantastic causes. This year we will be supporting RABI and The Brains Trust. Alongside the quiz we will have a silent auction, raffle and of course the hog roast!

Where: Lutterworth Rugby Club

When: Friday 6th December

Tickets are £15 per person, please contact the practice to book these.

We look forward to seeing you all there.

Any donations to the raffle or silent auction will be gratefully received.



Cross Counties Farm Vets

Lutterworth Branch: Elizabethan House, Lutterworth, Leicestershire, LE17 4NJ. ☎ 01455 552117

Welford Branch: Elkington Lodge, Elkington Road, Welford, Northampton, NN6 6HE. ☎ 01455 710935

Broughton Astley Branch: 12 Swannington Road, Broughton Astley, Leicestershire, LE9 6TU. ☎ 01455 282512

Email: office@ccfarmvets.co.uk **Website:** www.ccfarmvets.co.uk **Facebook:** Cross Counties Farm Vets

Broughton Vet Group Ltd trading as Cross Counties Farm Vets. Company number 9243007 registered in England & Wales. Registered office: Spitfire House, Aviator Court, York, YO30 4UZ